

Model: T2

On-board Charger Kit



INSTALLATION INSTRUCTIONS:

Installation Time: 0.5 Hour

TOOL REQUIRED: 9/16" Wrench, Phillips Screwdriver, and 4 mm Hex Wrench.

FOR SAFETY: Before installing kit, park machine on a level surface, turn key off and disconnect the negative (-) battery cable lead.

- Before mounting battery charger to machine, make sure the charger profile is properly set for your battery type (ex. lead-acid, gel, etc.). Failure to properly set charger may result in battery damage.

Remove the plug from the bottom of the charger to access the profile switches (Fig. 1). Set the profile switches according to the below table.



Fig. 1

Charger Profile Switch Settings

Battery Type	Switch 1	2
Wet (lead acid)	ON	OFF
LM Wet (low maintenance)	ON	ON
Gel	OFF	ON
Exide Gel	OFF	OFF

- Thread the M6x1.00x12 Pan Screw, supplied with kit, into the screw insert as shown. Do not thread screw completely into insert (Figure 2).

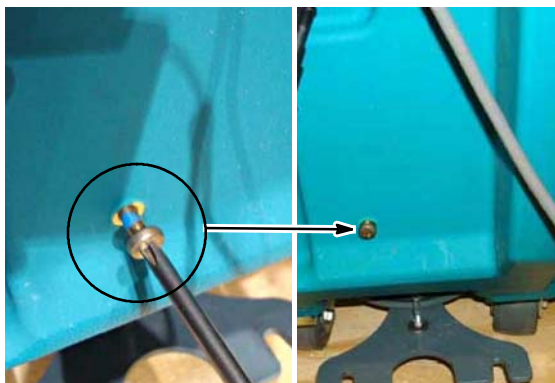


Fig. 2

- Mount the charger to the machine by engaging the M6x1.00x12 pan screw with slot located on backside of the charger, then attach the top of the charger using the knob screw provided (Figure 3).

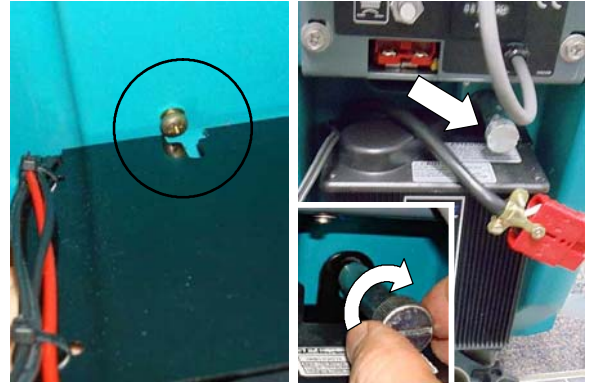


Fig. 3

- Mount the two cord hooks onto the machine as shown (Figure 4).

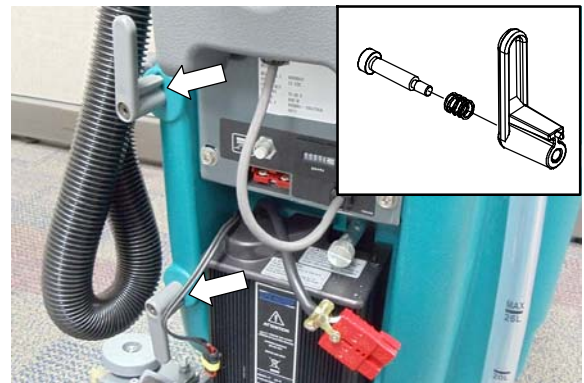


Fig. 4

- Remove the control handle by unthreading the adjustment knob completely out (Figure 5).



Fig. 5

On-board Charger Kit INSTALLATION INSTRUCTIONS - Continued

6. Remove the control console panel to access the internal wiring (Figure 6).



Fig. 6

7. Locate the open wire connector with yellow wires as shown (Figure 7).



Fig. 7

8. Connect the battery charger wire harness into the open connector (Fig. 8). Secure the wire harness up inside the control console with cable-tie provided. Replace console panel.



Fig. 8

9. Reattach the control handle by threading the adjustment knob completely in (Figure 9).



Fig. 9

10. Connect the charger plug into the machine's charging receptacle (Figure 10).



Fig. 10

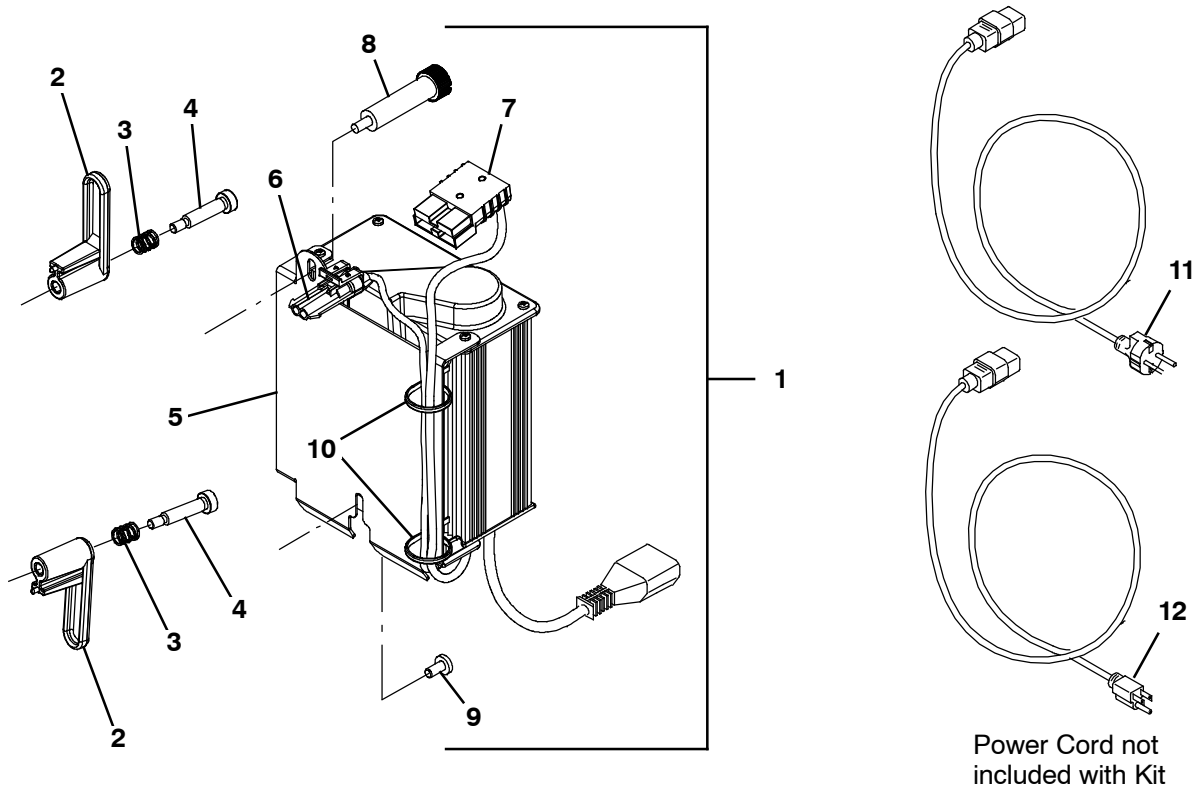
11. Plug the extension cord, not supplied with kit, into the charger and wrap cord around hooks as shown (Figure 4).



Fig. 11

NOTE: Refer to the Operator Manual for charging instructions.

ON-BOARD BATTERY CHARGER KIT PARTS LIST



	Ref.	Part No.	Description	Qty.
▽	1	9004854	Charger Kit, Onboard [T2] (Europe, International Markets)	1
	1	9008724	Charger Kit, Onboard [T2] (North America Market)	1
▲	2	610906	Hook, Cord [Viper]	2
▲	3	611311	Spring, Cmpr, 0.40od .05wir 00.5l, Pl,Mw	2
▲	4	1024965	Bolt, Shld, 08mmd X 030mm, M06 X 1.0	2
▲▽	5	1040169	Charger, Battery, 24v [Spe] (Europe, International Markets)	1
	5	1066718	Charger, Battery, 24v [Spe] (North America Market)	1
▲▲	6	1020021	Connector, Cap, Superseal 1.5, Replmt	1
	6	1020020	Seal, Cable, Superseal 1.5, Replmt [Tt]	1
	6	1020050	Receptacle, Superseal 1.5, Replmt [Tt]	1
▲▲	7	605387	Connector, Anderson, 50a,Red W/O Contact	1
▲	8	1044167	Knob, Rnd, 19.0d M6 X 50	1
▲	9	74027	Screw, Pan, Phl, M6 X 1.00 X 12, NI, PI	1
▲	10	130773	Tie, Cable, Nyl, 11.0l, .14w, 3.0 Max. D	2
	11	1044068	Cord, Power, 2.5 Meter, Black [Ce]	1
	11	1044069	Cord, Power, 2.5 Meter, Blk [Uk]	1
	11	1026325	Cord, Power, 1.0mm2 X 2.5 Meters, [Aus]	1
	11	1026330	Cord, Power, 1.0mm2 X 2.5 Meters [China]	1
	12	1044067	Cord, Power, 16/3, 2.5 Meters, Blk [US/Jpn]	1

▽ ASSEMBLY

▲ INCLUDED IN ASSEMBLY